

# BSP2012

LP0814



Malleable iron pipe fittings  
Accesorios de hierro maleable  
Conexões de ferro maleável  
Tempergussfittings  
Raccords en fonte malléable  
Raccordi di ghisa malleabile

Index Value  
Índice de Valores  
Índice de Valores  
Index-Werte  
Valeurs Indices  
Valori Indice



**TUPY**

The background features a complex architectural drawing overlaid on a blue grid. The drawing includes various geometric shapes, lines, and annotations such as '24M²', '10M²', '44M²', '3700', '5600', and '6700'. There are also circular markers labeled 'C', 'D', and 'E'. The overall aesthetic is technical and modern.

# General Information

## SYMBOLS

In order to simplify the tables for each fitting type, the following symbols were established:

Dimension	• Identifies the nominal dimensions of each fitting.
BLK	• Fittings with black (oiled) finish.
GAL	• Fittings with hot dipped galvanized finish.
Code	• TUPY fittings reference code.
Index	• Unit gross fee.
IP	• Number of pieces per standard pack.
EP	• Number of pieces per carton.
g	• Unit weight (in grammes).

## APPLICATION

All the TUPY BSP fittings are adequate for the supplying of water, gas, steam and compressed air at pressure of up to 25 bar and at 120°C temperature, or under 20 bar pressure, at temperatures in the 120°C to 300°C range.

## DIMENSIONS

All the TUPY BSP fittings are manufactured to the specifications of standard EN 10242.

## MATERIAL

All the TUPY BSP fittings are manufactured in malleable iron following standard EN 10242.


## THREADS

All the sealing threads on TUPY BSP fittings follow standard ISO 7-1, and all the coupling threads follow ISO 228 standard.

## INSPECTION

All the TUPY BSP fittings are inspected for conformity with the specifications of standard EN 10242.

## MARKING

All the TUPY BSP fittings, when possible, are marked with the TUPY® or  brand and/or with the nominal size identification.

## SURFACE TREATMENT

All the TUPY BSP fittings are manufactured in black (non-toxic oil) finish, or hot dipped galvanized (zinc-plated) finish, to EN 10242.

## BLACK FINISH

All TUPY BSP fittings are usually used for supply systems for diesel oil, alcohol, oxygen, gases, hot water, and other fluids which will not affect the pipeline useful life span, i.e., where little internal antirust protection is called for. It is recommended that black finish pipelines be protected externally against environmental action (acid soil, mortar, electrochemical corrosion etc.).

## GALVANIZED FINISH

Aside from the uses described for the black-finish ones, TUPY BSP's galvanized finish fittings are also applied in supply systems for drinking water, for fire prevention and fire fighting with sprinklers or hydrants; pipelines for compressed air, gas, gasoline and diesel oil; refrigeration fluids; industrial water and other fluids requiring internal antirust protection.

## HOW TO ORDER

For ordering TUPY BSP fittings please supply the following data:

- |                        |                     |
|------------------------|---------------------|
| 1 - Price List number. | 2 - Type.           |
| 3 - Finish.            | 4 - Fitting size.   |
| 5 - Quantity.          | 6 - In plastic bags |

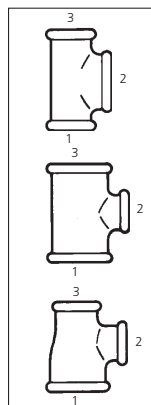
## FITTING DESIGNATION

TUPY BSP fitting names have been simplified and they derive from the basic functions for which they are used, such as pipe bends and elbows, T, unions etc. Fittings approved according to EN standards are marked "EN" after their description.

Regarding nominal fitting size indication, please remember:

- For fittings with two, three or four equal joint sizes, stating the size just once is sufficient.
- For reducing fittings with two joint sizes, indicate the larger-size fitting first, and then the smaller one.
- For reducing fittings with three joint sizes, the designation sequence is shown by the figures, obeying standard EN 10242.

NOTE: Tupy S.A. reserves the right to introduce to its product lines, at its discretion, any changes it may deem necessary. Weights (g) shown in the PRICE LIST are subject to alteration without prior notice.



## SÍMBOLOS

Como forma de simplificar las tablas de los distintos tipos de accesorios, fueron creados los símbolos abajo indicados:

Dimension	• Identifica los tamaños nominales de cada tipo ó figura.
BLK	• Accesorios con terminación negra aceitados.
GAL	• Accesorios con terminación galvanizada.
Code	• Código de referencia de los accesorios TUPY.
Index	• Precio unitario bruto.
IP	• Número de piezas por caja interna.
EP	• Número de piezas por caja externa.
g	• Peso unitario.

## APLICACION

Todos los accesorios TUPY BSP son adecuados para la conducción de agua, gas, vapor y aire comprimido para presiones de hasta 25 bar y a temperatura de hasta 120°C, ó bajo presiones de hasta 20 bar, para temperaturas entre 120°C y 300°C.

## DIMENSIONES

Todos los accesorios TUPY BSP se fabrican de acuerdo con las especificaciones de la norma EN 10242.

## MATERIAL

Los accesorios TUPY BSP se fabrican de hierro maleable de acuerdo con la norma EN 10242.


## ROSCA

Las roscas de union de los accesorios TUPY BSP se producen de acuerdo con la especificacion de la norma ISO 7-1 y el acoplamiento de las uniones, conforme ISO 228.

## INSPECCION

Todos los accesorios TUPY BSP son controlados para garantizar el cumplimiento de las especificaciones de la norma EN 10242.

## MARCAS

Los accesorios TUPY BSP, siempre que sea posible, llevan grabada la marca TUPY® o  la identificación del tamaño nominal.

## PROTECCION SUPERFICIAL

Todos los accesorios TUPY BSP se producen con acabado negro (con proteccion aceitosa no tóxica) ó galvanizado en caliente, conforme EN 10242.

## ACABADO NEGRO

Los accesorios TUPY de acabado negro se usan, por lo general, en redes de aceite diésel, alcohol, oxígeno, gases, agua caliente y en otros usos donde el fluido que se está conduciendo no comprometa la vida útil de la tubería, sin necesidad de mucha protección antioxidante interna. Para las tuberías de acabado negro se recomienda protección externa de toda la tubería contra la acción del medio (acidez del suelo, mortero, corrosión electroquímica, etc.).

## ACABADO GALVANIZADO

Se aplican los accesorios TUPY BS con terminado galvanizado además de las aplicaciones mencionadas para las de acabado negro, también son utilizadas en redes de agua potable, inclusive agua caliente, en redes de prevención y extinción de incendio con sprinklers o con hidrantes; redes de aire comprimido, gas, gasolina u aceite diésel; redes de refrigeración; agua industrial y otros fluidos donde se necesita protección interna contra la oxidación.

## COMO PEDIRLOS

Para pedir los accesorios TUPY BSP es necesario especificar los ítemes abajo indicados:

- |                                    |                           |
|------------------------------------|---------------------------|
| 1 - Número de la lista de precios. | 2 - Tipo ó figura.        |
| 3 - Acabado.                       | 4 - Tamaño nominal.       |
| 5 - Cantidad.                      | 6 - En bolsas de plástico |

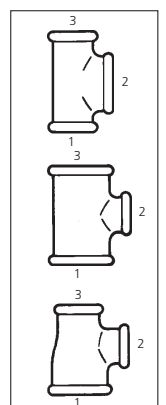
## DESIGNACION DE LOS ACCESORIOS

El nombre de los accesorios TUPY BSP es simplificado y deriva de su aplicación básica, como por ejemplo, curvas, codos, accesorios en T, manguitos de unión, etc. La designación de la norma EN, cuando hay, está en el catálogo después de su descripción.

El tamaño nominal de los accesorios debe ser especificado de acuerdo con las siguientes reglas:

- Para accesorios con dos, tres o cuatro derivaciones iguales, se designa una única dimensión.
- Para accesorios de reducción con dos derivaciones, se designa primero la mayor dimensión, y a continuación, la menor.
- Para accesorios de reducción con tres derivaciones, la secuencia de lectura está indicada por las figuras abajo que obedecen a la especificación de la norma EN 10242.

NOTE: La Tupy S.A. se reserva el derecho de introducir en sus líneas de productos las alteraciones que considere adecuadas. Los pesos (g) que constan de esta LISTA DE PRECIOS están sujetos a alteraciones sin aviso previo.



## SÍMBOLOS

Como forma de simplificar as tabelas dos diversos tipos de conexões (figuras), foram criados os símbolos abaixo:

Dimension	• Identifica os tamanhos nominais de cada conexão (figura).
BLK	• Conexões com acabamento preto (oleado).
GAL	• Conexões com acabamento galvanizado (zincado).
Code	• Código de referência das conexões TUPY.
Index	• Preço bruto unitário.
IP	• Número de peças por caixa interna
EP	• Número de peças por caixa externa.
g	• Peso unitário.

## APLICAÇÃO

As conexões TUPY BSP são adequadas para a condução de água, gás, vapor e ar comprimido, sob pressões de até 25 bar e à temperatura de até 120°C, ou sob pressões de até 20 bar, à temperatura entre 120°C e 300°C.

## DIMENSÕES

As conexões TUPY BSP são produzidas em conformidade com as especificações da Norma EN 10242.

## MATERIAL

As conexões TUPY BSP são produzidas em ferro maleável, em conformidade com a Norma EN 10242.


## ROSCA

As roscas de vedação das conexões TUPY BSP são produzidas em conformidade com as especificações da Norma ISO 7-1 e as roscas de acoplamento, conforme ISO 228.

## INSPEÇÃO

As conexões TUPY BSP são inspecionadas de modo a garantir as especificações da Norma EN 10242.

## MARCAS

As conexões TUPY BSP, quando as dimensões permitem, são gravadas com a marca TUPY® ou  e/ou com a identificação do tamanho nominal.

## PROTEÇÃO SUPERFICIAL

As conexões TUPY BSP são produzidas com acabamento preto (óleo não tóxico) ou galvanizado a fogo (zincado), conforme EN 10242.

## ACABAMENTO PRETO

As conexões TUPY BSP com acabamento preto, geralmente, são utilizadas em redes de óleo diesel, álcool, oxigênio, gás, água quente e naquelas aplicações onde o fluido conduzido não compromete a vida útil da tubulação, necessitando de pouca proteção interna contra a oxidação. Para as tubulações com acabamento preto, recomenda-se proteger externamente toda a tubulação contra a ação do meio (ácidez do solo, argamassa, corrosão eletroquímica etc.).

## ACABAMENTO GALVANIZADO

As conexões TUPY BSP com acabamento galvanizado, além das aplicações citadas para as de acabamento preto, também são utilizadas em redes de água potável, ar comprimido, gasolina, refrigeração, água industrial, em rede de prevenção e combate a incêndio com sprinklers ou com hidrantes e naquelas aplicações onde o fluido conduzido implica na necessidade de proteção interna contra oxidação.

## COMO ENCOMENDAR

A discriminação dos itens abaixo é necessária para encomendar as conexões TUPY BSP:

1 - Número da lista de preço.	2 - Figura.
3 - Acabamento.	4 - Tamanho nominal.
5 - Quantidade.	6 - Em saco plástico

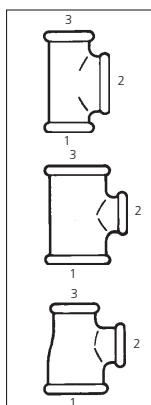
## DESIGNAÇÃO DAS CONEXÕES

Os nomes das figuras das conexões TUPY BSP são simplificados e derivam da função básica de sua utilização, por exemplo, curvas, cotovelos, tês, luvas, uniões etc. A denominação EN, quando existente, está colocada no catálogo após o nome das figuras.

O tamanho nominal das conexões deve ser explicitado segundo as regras abaixo:

- A) Para conexões com duas, três ou quatro derivações iguais, é designada apenas uma dimensão;
- B) Para conexões com duas derivações de redução, é designada primeiramente a maior e, em seguida, a menor dimensão;
- C) Para conexões com três derivações de redução, a sequência de leitura está indicada pelos desenhos abaixo, que obedecem às especificações da Norma EN 10242.

NOTA: A Tupy S.A. reserva-se o direito de introduzir nas suas linhas de produtos as alterações que julgar adequadas. Os pesos (g) constantes desta LISTA DE PREÇOS estão sujeitos a alterações sem prévio aviso.



## ZEICHEN

Zur Vereinfachung der Tabellen der verschiedenen Tempergusffittings (Figuren) wurden nachstehende Zeichen geschaffen:

Dimension	• Kennzeichnet die Nenngröße aller Tempergusffittings (Figuren).
BLK	• Tempergusffittings in schwarzer Ausführung (eingeölt).
GAL	• Tempergusffittings in galvanisierter (verzinkter) Ausführung.
Code	• Bezugscode der TUPY-Tempergusffittings
Index	• Brutto-Einheitspreis.
IP	• Anzahl der Teile je interne Schachtel.
EP	• Anzahl der Teile je äußere Schachtel.
g	• Stückgewicht (in Gramm).

## ANWENDUNG

Die TUPY BSP - Tempergusffittings sind geeignet für Wasser-, Gas-, Dampf- und Preßluftleitungen mit einer Druckbelastbarkeit bis 25 bar und Temperaturen bis 120°C, oder einer Druckbelastbarkeit bis 20 bar und Temperaturen zwischen 120°C und 300°C.

## ABMESSUNGEN

Tempergusffittings werden hergestellt in Übereinstimmung mit den Spezifikationen der Norm EN 10242.

## WERKSTOFF

Die TUPY BSP - Tempergusffittings werden aus Tempergus laut Norm EN 10242.


## GEWINDE

Die Dichtungsgewinde der TUPY BSP - Tempergusffittings werden in Übereinstimmung mit ISO 7-1 hergestellt und die Verbindungsgewinde laut ISO 228.

## PRÜFUNG

Die TUPY BSP - Tempergusffittings werden geprüft um die Anforderungen der Norm EN 10242 sicherzustellen.

## KENNZEICHNUNGEN

Falls die Abmessungen es gestatten, werden die TUPY BSP - Tempergusffittings mit der Marke TUPY® oder  und/oder der Nenngröße gekennzeichnet.

## OBERFLÄCHENSCHUTZ

Die TUPY BSP - Tempergusffittings werden mit schwarzem finish oder feuerverzinkt hergestellt, laut EN 10242.

## SCHWARZE AUSFÜHRUNG

Die schwarz ausgeführten TUPY BSP - Tempergusffittings werden im allgemeinen in Dieselöl-, Alkohol-, Sauerstoff-, Gas-, Heißwasserleitungen eingesetzt und dort wo das geleitete Mittel die Lebensdauer der Leitung nicht beeinflusst, und geringen inneren Schutz gegen Korrosion erfordert. Bei Leitungen in schwarzer Ausführung wird empfohlen die ganze Leitung außen gegen Umgebungseinflüsse zu schützen (Bodensäure, Mörtel, elektrochemische Korrosion usw.).

## VERZINKTE AUSFÜHRUNG

Die TUPY BSP - Tempergusffittings in verzinkter Ausführung werden außer den o.g. Anwendungen der schwarzen Ausführung auch in Trinkwasser- und Feuerschutzleitungen für Sprinkler und Hydranten, Preßluft-, Benzin-, Kühlmittel- und Industrierwasserleitungen eingesetzt, sowie dort wo die durchgeleitete Flüssigkeit einen inneren Korrosionsschutz erfordert.

## BESTELLVORGANG

Für die Bestellung von TUPY BSP - Tempergusffittings sind folgende Angaben erforderlich:

1 - Nummer der Preisliste.	2 - Figur.
3 - Ausführung.	4 - Nenngröße.
5 - Menge.	6 - Plastikbeutel

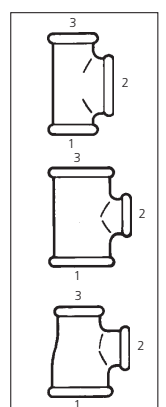
## BEZEICHNUNG DER TEMPERGUSFFITTINGS

Die Namen der TUPY BSP - Tempergusffittings sind vereinfacht und ergeben sich aus der Anwendung, z.B. Kurven, Winkelstücke, T-Stücke, Hülsen, Verschraubungen usw. Die EN-Bezeichnung, falls vorhanden befindet sich im Katalog, im Anschluß an den Namen der Figuren.

Die Nenngröße der Tempergusffittings ist nach folgenden Regeln anzugeben:

- A) Bei Tempergusffittings mit zwei, drei oder vier gleichgroßen Abzweigungen wird nur eine Abmessung angegeben;
- B) Bei Tempergusffittings mit zwei verkleinerten Abzweigungen wird erst die größere und dann die kleinere Abmessung angegeben;
- C) Bei Tempergusffittings mit drei verkleinerten Abzweigungen wird die Ablesefolge in Zeichnungen angegeben, welche den Anforderungen von EN 10242 entsprechen.

ANMERKUNG: Die Tupy S.A. behält sich das Recht vor, in ihre Produktpalette die als geeignet betrachteten Änderungen einzuführen. Die in dieser Preisliste enthaltenen Gewichte (g) unterliegen Änderungen ohne vorherige Ankündigung.



## SIGNES UTILISÉS

Dans le but de simplifier les tableaux relatifs aux divers types de raccords, les signes ci-dessous ont été créés:

Dimension	• Sert à identifier les dimensions nominales de chaque raccord (figure).
BLK	• Raccords en exécution noire (à l'huile).
GAL	• Raccords en exécution galvanisée.
Code	• Code de référence des raccords TUPY.
Index	• Prix unitaire brut.
IP	• Nombre de pièces par sachet.
EP	• Nombre de pièces par carton.
g	• Poids unitaire (en gramme).

## USAGE

Les raccords TUPY BSP servent à conduire de l'eau, de la vapeur, du gaz et de l'air comprimés, sous des pressions et températures allant respectivement jusqu'à 25 bar et 120°C, ou jusqu'à 20 bar et température entre 120°C et 300°C.

## DIMENSIONS

Tous les raccords TUPY BSP sont produits en accord avec les spécifications de Norme EN 10242.

## MATERIAUX

Les raccords TUPY BSP sont produits en fonte malléable, selon la norme EN 10242.

## FILETAGE

Les joints des raccords TUPY BSP sont filetés d'après les spécifications de Norme ISO 7-1 et les vis d'assemblage selon la Norme ISO 228.

## INSPECTION

Les raccords TUPY BSP sont inspectés de façon à assurer les spécifications de Norme EN 10242.

## MARQUAGE

Les raccords TUPY BSP, dans la mesure où les dimensions le permettent, portent la marque TUPY® ou  et/ou l'identification de la dimension nominale.

## TRAITEMENT DE SURFACE

Les raccords TUPY BSP sont livrables en exécution noire (huile non toxique) ou zinguée au feu (galvanisation à chaud), selon la Norme EN 10242.

## EXÉCUTION NOIRE

D'une façon générale les raccords TUPY BSP en exécution noire sont employés dans les réseaux d'huile lourde (diesel), d'alcool, d'oxygène, de gaz, d'eau chaude et dans les applications où le fluide transporté ne peut nuire à la longévité de la tuyauterie, dont la protection interne contre l'oxydation est peu résistante.

Pour les tuyauteries en exécution noire, il est conseillé de les protéger extérieurement contre l'action du milieu (acidité du sol, mortiers, corrosion électrochimique etc.).

## EXÉCUTION GALVANISÉE

Les raccords TUPY BSP en exécution galvanisée, en plus des applications mentionnées ci-dessus pour ceux en exécution noire, sont aussi employés dans les réseaux d'eau potable, les réseaux construits pour la prévention et le combat contre les incendies qui utilisent des sprinklers ou des bouches à eau, les réseaux d'air comprimé, de carburants (essence), de réfrigération, d'eau industrielle, ainsi que dans les applications qui exigent une protection interne très résistante contre l'oxydation.

## COMMANDE

Pour les commandes de raccords TUPY BSP en fonte malléable, indiquer les données suivantes:

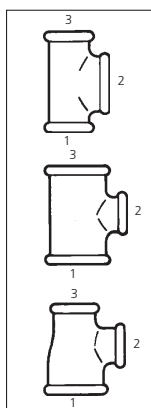
- |                                     |                               |
|-------------------------------------|-------------------------------|
| 1 - Numéro de la liste de prix.     | 2 - Type de raccord.          |
| 3 - Exécution, noire ou galvanisée. | 4 - Grandeur du raccordement. |
| 5 - Nombre de pièces.               | 6 - En Sachets de plastique   |

## DÉSIGNATION DES RACCORDS

La dénomination des types de raccord TUPY BSP provient des noms très simples de types de base, tels que, coudés, courbes, té, croix etc. Lorsque celle-ci existe, le catalogue indique la dénomination EN après le nom du modèle.

Les règles suivantes sont d'usage courant pour l'ordre de désignation des grandeurs de raccordement:

- A) Pour les raccords égaux, il suffit d'indiquer une fois les grandeurs de raccordement;
- B) Pour les raccords réduits à 2 grandeurs de raccordement, indiquer d'abord la grandeur du plus grand, ensuite celle du plus petit raccordement.
- C) Pour les raccords avec trois grandeurs de raccordement, l'ordre de désignation est indiquée par les figures, ci-contre laquelle obéit aux spécifications de norme EN 10242.



NOTE: Tupy S.A. se réserve le droit d'introduire dans sa ligne de produits les changements qu'elle jugera adéquats. Les poids unitaires (g) indiqués dans la LISTE de PRIX peuvent subir des changements sans préavis.

## SIMBOLI

Al fine di semplificare le tabelle di ogni tipo di raccordo, sono stati creati i simboli sottoelencati:

Dimension	• Identifica le misure nominali di ogni raccordo.
BLK	• Raccordi con esecuzione nera (oliata).
GAL	• Raccordi con esecuzione galvanizzata (zincata).
Code	• Codice di riferimento dei raccordi TUPY.
Index	• Prezzo lordo unitario.
IP	• Numero di pezzi per ogni sachetto.
EP	• Numero di pezzi per ogni cartone.
g	• Peso unitario (in grammi).

## APPLICAZIONE

Tutti i raccordi TUPY BSP sono adeguati per condurre acqua, gas, vapore e aria compressa sotto pressioni fino a 25 bar e a temperatura fino a 120°C, o sotto pressioni fino a 20 bar per temperatura fra 120°C e 300°C.

## DIMENSIONI

Tutti i raccordi TUPY BSP sono fabbricati secondo le specificazioni delle norme EN 10242.

## MATERIALE

Tutti i raccordi TUPY BSP sono fabbricati in ghisa malleabile secondo le norme EN 10242.


## FILETTATURA

Tutte le filettature delle giunzioni dei raccordi TUPY BSP sono fabbricate secondo le specificazioni delle norme ISO 7-1 mentre le giunzioni per accoppiamento, conforme ISO 228.

## ISPEZIONE

Tutti i raccordi TUPY BSP sono ispezionati per assicurare le specificazioni delle norme EN 10242.

## MARCHIO

Tutti i raccordi TUPY BSP, quando possibile, portano il marchio TUPY® o il simbolo  e la misura nominale.

## TRATTAMENTO DELLE SUPERFICI

Tutti i raccordi TUPY BSP sono fabbricati con esecuzione nera (olio non tossico) o galvanizzata (zincata) a fuoco conforme EN 10242.

## ESECUZIONE NERA

Tutti i raccordi TUPY BSP con esecuzione nera sono in genere per reti di olio diesel, alcol, ossigeno, gas, acqua calda ed altri usi in cui ciò che si sta trasportando non comprometta la durata della vita della tubazione e richieda poca protezione interna contro l'ossidazione. Per le tubazioni con esecuzione nera si raccomanda una protezione esterna contro l'azione dell'ambiente (acidità del suolo, malta, corrosione elettrochimica ecc.).

## ESECUZIONE GALVANIZZATA

Tutti i raccordi TUPY BSP con esecuzione galvanizzata hanno le stesse applicazioni di quelli con esecuzione nera ed inoltre sono applicati in reti di acqua potabile, di aria compressa, di benzina, di refrigerazione, di acque industriali, in reti di prevenzione e per combattere incendi con sprinklers o con idranti e nei casi in cui sia necessaria una protezione interna contro l'ossidazione.

## ORDINAZIONI

Per ordinare i raccordi TUPY BSP, bisogna specificare i dati seguenti:

- |                                |                          |
|--------------------------------|--------------------------|
| 1 - Numero del listino prezzi. | 2 - Figura.              |
| 3 - Esecuzione.                | 4 - Misura nominale.     |
| 5 - Quantità.                  | 6 - In sachetto plastico |

## DENOMINAZIONE DEI RACCORDI

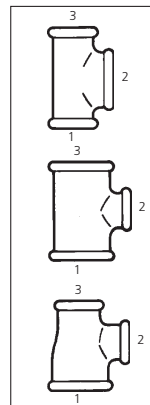
La denominazione dei tipi di raccordi TUPY BSP è semplificata e deriva dai nomi dei tipi base come, per esempio, curve, gomiti, T, manicotti ecc. I raccordi approvati dalla norma EN sono contrassegnati con la sigla EN dopo la loro denominazione nel catalogo.

La misura nominale dei raccordi deve essere osservata come segue:

- A) Per raccordi con due, tre o quattro derivazioni uguali, è indicata soltanto una misura.
- B) Per raccordi con due derivazioni di riduzione, è indicata prima la maggiore e dopo la minor misura.
- C) Per raccordi con tre derivazioni di riduzione, la sequenza di lettura è indicata dalle figure, che ubbidiscono alle specificazioni delle norme EN 10242.

NOTE: Tupy S.A. si riserva il diritto d'introdurre nelle sue linee di prodotti le alterazioni che riterrà adeguate.

I pesi (g) che constano in questo listino prezzi sono soggetti ad alterazioni senza preavviso.





The background features a complex architectural drawing in white lines on a dark blue gradient. The drawing includes various geometric shapes, lines, and technical annotations. Dimensions such as 3700, 5600, and 6700 are visible, along with grid markers labeled C, D, and E. The overall aesthetic is technical and modern.

# List of Products

## LONG SWEEP BEND

Curva MH  
Curva MF  
Langer Bogen  
Courbe à grand Rayon  
Curva Lunga

**1**  
ISO G4



Finish	Dimension	Code	Index	IP	EP	g
BLK	1/4	24.002	4,00	10	500	56
GAL	1/4	24.002	4,90	10	500	51
BLK	3/8	24.003	4,75	10	300	101
GAL	3/8	24.003	6,00	10	300	101
BLK	1/2	24.004	4,25	10	200	124
GAL	1/2	24.004	5,35	10	200	131
BLK	3/4	24.006	7,40	-	120	203
GAL	3/4	24.006	9,35	-	120	211
BLK	1	24.007	10,00	-	70	349
GAL	1	24.007	12,70	-	70	363
BLK	1 1/4	24.008	17,70	-	30	616
GAL	1 1/4	24.008	21,95	-	30	639
BLK	1 1/2	24.009	22,80	-	25	772
GAL	1 1/2	24.009	29,05	-	25	800
BLK	2	24.010	37,80	-	12	1296
GAL	2	24.010	46,85	-	12	1336
BLK	2 1/2	24.011	82,40	-	6	2186
GAL	2 1/2	24.011	105,40	-	6	2215
BLK	3	24.012	106,75	-	4	3059
GAL	3	24.012	136,15	-	4	3132
BLK	4	24.014	193,70	-	1	5498
GAL	4	24.014	245,45	-	1	5737

## SHORT BEND

Curva MH Corta  
Curva MF Curta  
Kurzer Bogen  
Courbe Courte  
Curva Corta

**1a**  
ISO D4



Finish	Dimension	Code	Index	IP	EP	g
BLK	1/2	22.004	3,90	10	220	101
GAL	1/2	22.004	4,90	10	220	109
BLK	3/4	22.006	6,10	10	150	162
GAL	3/4	22.006	7,50	10	150	170
BLK	1	22.007	8,10	-	70	318
GAL	1	22.007	10,10	-	70	325
BLK	1 1/4	22.008	11,85	-	35	543
GAL	1 1/4	22.008	15,25	-	35	564
BLK	1 1/2	22.009	17,35	-	30	635
GAL	1 1/2	22.009	21,95	-	30	666
BLK	2	22.010	31,05	-	18	918
GAL	2	22.010	38,45	-	18	975

## LONG SWEEP BEND

Curva Hembra  
Curva Fêmea  
Langer Bogen  
Courbe à grand Rayon  
Curva Lunga

**2**  
ISO G1



Finish	Dimension	Code	Index	IP	EP	g
BLK	3/8	23.003	4,60	10	250	95
GAL	3/8	23.003	6,00	10	250	105
BLK	1/2	23.004	4,90	10	160	141
GAL	1/2	23.004	6,05	10	160	151
BLK	3/4	23.006	7,60	-	90	240
GAL	3/4	23.006	9,40	-	90	255
BLK	1	23.007	10,00	-	50	441
GAL	1	23.007	12,70	-	50	459
BLK	1 1/4	23.008	17,75	-	25	689
GAL	1 1/4	23.008	22,05	-	25	726
BLK	1 1/2	23.009	21,90	-	20	872
GAL	1 1/2	23.009	27,10	-	20	890
BLK	2	23.010	30,20	-	10	1591
GAL	2	23.010	37,65	-	10	1619
BLK	2 1/2	23.011	83,80	-	5	2383
GAL	2 1/2	23.011	105,95	-	5	2434
BLK	3	23.012	105,25	-	3	3953
GAL	3	23.012	133,20	-	3	4183
BLK	4	23.014	199,40	-	1	7347
GAL	4	23.014	252,55	-	1	7490

## SHORT BEND

Curva Hembra Corta  
Curva Fêmea Curta  
Kurzer Bogen  
Courbe Courte  
Curva Corta

**2a**  
ISO D1



Finish	Dimension	Code	Index	IP	EP	g
BLK	1/2	21.004	3,70	10	200	128
GAL	1/2	21.004	4,70	10	200	132
BLK	3/4	21.006	5,00	10	120	220
GAL	3/4	21.006	6,45	10	120	225
BLK	1	21.007	7,80	-	65	326
GAL	1	21.007	10,00	-	65	324
BLK	1 1/4	21.008	11,60	-	35	647
GAL	1 1/4	21.008	15,00	-	35	664
BLK	1 1/2	21.009	15,90	-	25	643
GAL	1 1/2	21.009	20,20	-	25	684
BLK	2	21.010	25,05	-	12	1160
GAL	2	21.010	32,45	-	12	1212

## LONG SWEEP BEND

Curva Macho  
Curva Macho  
Langer Bogen  
Courbe à Grand Rayon  
Curva Lunga

**3**  
ISO G8



Finish	Dimension	Code	Index	IP	EP	g
BLK	3/8	25.003	6,30	10	400	63
GAL	3/8	25.003	7,75	10	400	66
BLK	1/2	25.004	7,40	10	250	98
GAL	1/2	25.004	9,30	10	250	104
BLK	3/4	25.006	8,30	-	120	170
GAL	3/4	25.006	10,45	-	120	178
BLK	1	25.007	12,00	-	70	344
GAL	1	25.007	14,95	-	70	358
BLK	1 1/4	25.008	22,55	-	35	553
GAL	1 1/4	25.008	28,60	-	35	581
BLK	1 1/2	25.009	32,15	-	25	712
GAL	1 1/2	25.009	40,55	-	25	734
BLK	2	25.010	43,25	-	14	1309
GAL	2	25.010	54,75	-	14	1370
BLK	2 1/2	25.011	98,07	-	6	2142
GAL	2 1/2	25.011	141,20	-	6	2221
BLK	3	25.012	118,71	-	4	2954
GAL	3	25.012	144,21	-	4	3118
BLK	4	25.014	247,04	-	1	5376
GAL	4	25.014	351,28	-	1	5562
BLK	6	25.016	578,41	-	1	13810
GAL	6	25.016	824,40	-	1	14336

## 45° LONG SWEEP BEND

Curva MH 45°  
Curva MF 45°  
Langer Bogen 45°  
Courbe à grand Rayon 45°  
Curva Lunga 45°

**40**  
ISO G4/45°



Finish	Dimension	Code	Index	IP	EP	g
BLK	3/8	27.003	5,30	10	480	60
GAL	3/8	27.003	6,55	10	480	62
BLK	1/2	27.004	4,90	10	270	104
GAL	1/2	27.004	6,05	10	270	108
BLK	3/4	27.006	6,55	10	140	174
GAL	3/4	27.006	8,20	10	140	184
BLK	1	27.007	9,35	5	90	268
GAL	1	27.007	11,50	5	90	276
BLK	1 1/4	27.008	16,10	-	50	420
GAL	1 1/4	27.008	20,05	-	50	434
BLK	1 1/2	27.009	19,35	-	34	516
GAL	1 1/2	27.009	23,90	-	34	537
BLK	2	27.010	30,45	-	15	934
GAL	2	27.010	37,90	-	15	982
BLK	2 1/2	27.011	66,50	-	12	1301
GAL	2 1/2	27.011	84,15	-	12	1322
BLK	3	27.012	72,45	-	6	2004
GAL	3	27.012	91,80	-	6	2073



## 45° LONG SWEEP BEND

Curva Hembra 45°  
Curva Fêmea 45°  
Langer Bogen 45°  
Courbe à Grand Rayon 45°  
Curva Lunga 45°

**41**  
ISO G1/45°

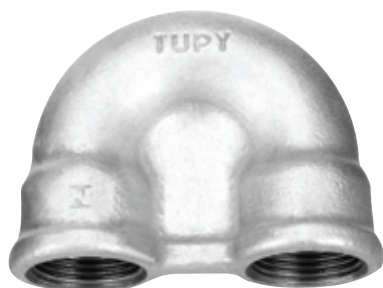


Finish	Dimension	Code	Index	IP	EP	g
BLK	1/2	26.004	5,95	10	220	109
GAL	1/2	26.004	7,25	10	220	115
BLK	3/4	26.006	7,30	10	130	177
GAL	3/4	26.006	9,15	10	130	186
BLK	1	26.007	9,45	5	60	288
GAL	1	26.007	11,70	5	60	298
BLK	1 1/4	26.008	16,75	-	35	512
GAL	1 1/4	26.008	21,05	-	35	512
BLK	1 1/2	26.009	21,95	-	25	704
GAL	1 1/2	26.009	27,80	-	25	712
BLK	2	26.010	31,05	-	14	1128
GAL	2	26.010	39,05	-	14	1183

## RETURN BEND

Curva de Retorno  
Curva de Retorno  
Doppelbogen  
Courbe Double  
Curva Doppia

**60**



Finish	Dimension	Code	Index	IP	EP	g
BLK	1/2	29.004	15,20	10	150	170
GAL	1/2	29.004	19,15	10	150	176
BLK	3/4	29.006	23,25	-	80	295
GAL	3/4	29.006	29,35	-	80	318
BLK	1	29.007	29,55	-	40	549
GAL	1	29.007	37,30	-	40	547
BLK	1 1/4	29.008	40,75	-	27	853
GAL	1 1/4	29.008	51,45	-	27	878
BLK	1 1/2	29.009	48,20	-	20	1335
GAL	1 1/2	29.009	60,85	-	20	1267
BLK	2	29.010	73,55	-	10	1819
GAL	2	29.010	92,90	-	10	1854

## CROSSOVER

Curva Puente  
Curva de Transposição  
Überspringbogen  
Dos d'âne  
Curva di Sorpasso

**85**



Finish	Dimension	Code	Index	IP	EP	g
BLK	1/2 - 1/2	28.076	6,20	-	130	168
GAL	1/2 - 1/2	28.076	7,75	-	130	174
BLK	1/2 - 1	28.078	11,63	-	110	201
GAL	1/2 - 1	28.078	16,41	-	110	244
BLK	3/4 - 3/4	28.079	9,45	-	70	286
GAL	3/4 - 3/4	28.079	11,70	-	70	299
BLK	3/4 - 1	28.080	11,44	-	70	319
GAL	3/4 - 1	28.080	15,68	-	70	337

## ELBOW

Codo  
Cotovelo  
Winkel  
Coude  
Gomito

**90**  
ISO A1



Finish	Dimension	Code	Index	IP	EP	g
BLK	1/4	07.002	2,65	10	700	35
GAL	1/4	07.002	3,15	10	700	37
BLK	3/8	07.003	2,15	10	400	67
GAL	3/8	07.003	2,75	10	400	70
BLK	1/2	07.004	1,45	10	270	79
GAL	1/2	07.004	1,95	10	270	90
BLK	3/4	07.006	2,35	10	150	132
GAL	3/4	07.006	3,05	10	150	138
BLK	1	07.007	3,60	10	100	209
GAL	1	07.007	4,50	10	100	215
BLK	1 1/4	07.008	6,85	-	55	314
GAL	1 1/4	07.008	8,45	-	55	328
BLK	1 1/2	07.009	11,00	-	40	450
GAL	1 1/2	07.009	13,65	-	40	473

## ELBOW

Codo  
Cotovelo  
Winkel  
Coude  
Gomito

Finish	Dimension	Code	Index	IP	EP	g
BLK	2	07.010	12,70	-	20	695
GAL	2	07.010	16,05	-	20	710
BLK	2½	07.011	37,25	-	15	1112
GAL	2½	07.011	47,15	-	15	1138
BLK	3	07.012	51,90	-	8	1660
GAL	3	07.012	64,60	-	8	1730
BLK	4	07.014	91,50	-	5	2780
GAL	4	07.014	115,70	-	5	2875
BLK	5	07.015	427,41	-	2	4306
GAL	5	07.015	605,42	-	2	4630
BLK	6*	07.016	449,92	-	1	8019
GAL	6*	07.016	637,29	-	1	8157

\*Banded, only

## ELBOW REDUCING

Codo de Reducción  
Cotovelo de Redução  
Winkel, Reduziert  
Coude Réduit  
Gomito di Riduzione

**90R**  
ISO A1



Finish	Dimension	Code	Index	IP	EP	g
BLK	¾ x ¼	08.023	4,10	10	560	45
GAL	¾ x ¼	08.023	4,95	10	560	48
BLK	½ x ¼	08.025	4,95	10	320	78
GAL	½ x ¼	08.025	6,10	10	320	82
BLK	½ x ⅜	08.026	2,90	10	350	77
GAL	½ x ⅜	08.026	3,60	10	350	80
BLK	¾ x ⅜	08.028	4,70	10	250	120
GAL	¾ x ⅜	08.028	5,95	10	250	129
BLK	¾ x ½	08.029	3,45	10	210	115
GAL	¾ x ½	08.029	4,05	10	210	118
BLK	1 x ½	08.032	4,55	10	150	140
GAL	1 x ½	08.032	5,90	10	150	146
BLK	1 x ¾	08.033	5,05	10	120	174
GAL	1 x ¾	08.033	6,20	10	120	180
BLK	1¼ x ¾	08.036	10,25	-	80	252
GAL	1¼ x ¾	08.036	12,70	-	80	263
BLK	1¼ x 1	08.037	8,10	-	70	274
GAL	1¼ x 1	08.037	10,10	-	70	280
BLK	½ x ¾	08.040	12,55	-	65	291
GAL	½ x ¾	08.040	15,55	-	65	306
BLK	½ x 1	08.041	11,60	-	60	360
GAL	½ x 1	08.041	14,75	-	60	370
BLK	1½ x 1¼	08.042	13,00	-	50	429
GAL	1½ x 1¼	08.042	16,10	-	50	428
BLK	2 x 1½	08.047	20,85	-	30	658
GAL	2 x 1½	08.047	25,95	-	30	624
BLK	2½ x 2	08.051	58,62	-	20	1039
GAL	2½ x 2	08.051	62,85	-	20	1006

## ELBOW

Codo MH  
Cotovelo MF  
Winkel  
Coude  
Gomito

**92**  
ISO A4



Finish	Dimension	Code	Index	IP	EP	g
BLK	¼	11.002	2,75	10	700	41
GAL	¼	11.002	3,40	10	700	43
BLK	⅜	11.003	2,65	10	480	58
GAL	⅜	11.003	3,15	10	480	61
BLK	½	11.004	1,85	10	270	103
GAL	½	11.004	2,25	10	270	107
BLK	¾	11.006	2,85	10	180	142
GAL	¾	11.006	3,50	10	180	148
BLK	1	11.007	4,60	10	100	222
GAL	1	11.007	5,90	10	100	240
BLK	1¼	11.008	8,15	-	50	351
GAL	1¼	11.008	9,90	-	50	365
BLK	1½	11.009	11,90	-	40	466
GAL	1½	11.009	14,85	-	40	494
BLK	2	11.010	15,50	-	25	722
GAL	2	11.010	19,50	-	25	736
BLK	2½	11.011	39,10	-	14	1189
GAL	2½	11.011	48,60	-	14	1200
BLK	3	11.012	51,45	-	8	1704
GAL	3	11.012	64,05	-	8	1750
BLK	4	11.014	86,45	-	4	2744
GAL	4	11.014	109,40	-	4	2844

## UNION ELBOW, TAPER SEAT

Codo Unión Asiento Hierro  
 União Cotovelo Assento Ferro  
 Winkelverschraubung mit Kegeldichtung  
 Coude Union à Joint Conique  
 Gomito com Bocchettone a Sede Conica

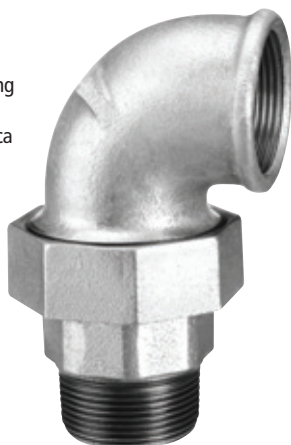


**96**  
 ISO UA11

Finish	Dimension	Code	Index	IP	EP	g
BLK	1/2	68.004	10,35	-	80	199
GAL	1/2	68.004	13,05	-	80	233
BLK	3/4	68.006	11,95	-	50	354
GAL	3/4	68.006	15,10	-	50	363
BLK	1	68.007	17,25	-	35	466
GAL	1	68.007	21,70	-	35	497
BLK	1 1/4	68.008	29,10	-	20	792
GAL	1 1/4	68.008	36,15	-	20	820
BLK	1 1/2	68.009	34,10	-	15	959
GAL	1 1/2	68.009	43,15	-	15	1016
BLK	2	68.010	57,50	-	12	1457
GAL	2	68.010	72,75	-	12	1492
BLK	2 1/2	68.011	123,20	-	5	2432
GAL	2 1/2	68.011	155,95	-	5	2488
BLK	3	68.012	159,75	-	3	3515
GAL	3	68.012	202,50	-	3	3652

## UNION ELBOW, TAPER SEAT

Codo Unión Asiento Hierro MH  
 União Cotovelo Assento Ferro MF  
 Winkelverschraubung mit Kegeldichtung  
 Coude Union à Joint Conique  
 Gomito com Bocchettone a Sede Conica



**98**  
 ISO UA12

Finish	Dimension	Code	Index	IP	EP	g
BLK	1/2	69.004	10,40	-	80	225
GAL	1/2	69.004	13,10	-	80	274
BLK	3/4	69.006	13,25	-	45	397
GAL	3/4	69.006	16,65	-	45	405
BLK	1	69.007	18,15	-	30	575
GAL	1	69.007	22,80	-	30	582
BLK	1 1/4	69.008	30,15	-	20	966
GAL	1 1/4	69.008	38,25	-	20	910
BLK	1 1/2	69.009	37,70	-	15	1177
GAL	1 1/2	69.009	46,85	-	15	1218
BLK	2	69.010	61,25	-	8	1756
GAL	2	69.010	77,45	-	8	1788
BLK	2 1/2	69.011	136,05	-	5	2853
GAL	2 1/2	69.011	172,10	-	5	2892
BLK	3	69.012	182,05	-	3	4213
GAL	3	69.012	230,75	-	3	4380

## 45° ELBOW

Codo 45°  
 Cotovelo 45°  
 Winkel 45°  
 Coude 45°  
 Gomito 45°



**120**  
 ISO A1/45°

Finish	Dimension	Code	Index	IP	EP	g
BLK	3/8	09.003	6,15	10	500	49
GAL	3/8	09.003	7,55	10	500	52
BLK	1/2	09.004	5,00	10	300	68
GAL	1/2	09.004	6,35	10	300	72
BLK	3/4	09.006	6,20	10	200	105
GAL	3/4	09.006	7,85	10	200	111
BLK	1	09.007	9,15	10	120	161
GAL	1	09.007	11,50	10	120	165
BLK	1 1/4	09.008	16,40	-	60	262
GAL	1 1/4	09.008	20,85	-	60	269
BLK	1 1/2	09.009	20,20	-	50	390
GAL	1 1/2	09.009	25,45	-	50	390
BLK	2	09.010	26,30	-	30	490
GAL	2	09.010	33,25	-	30	511
BLK	2 1/2	09.011	54,30	-	18	870
GAL	2 1/2	09.011	68,65	-	18	905
BLK	3	09.012	53,55	-	9	1119
GAL	3	09.012	67,70	-	9	1155
BLK	4	09.014	72,84	-	6	2082
GAL	4	09.014	113,59	-	6	1966
BLK	5	09.015	284,19	-	2	3668
GAL	5	09.015	384,98	-	2	3715
BLK	6	09.016	448,41	-	2	5788
GAL	6	09.016	612,00	-	2	5905

## 45° ELBOW

Codo MH 45°  
Cotovelo MF 45°  
Winkel 45°  
Coude 45°  
Gomito 45°

**121**  
ISO A4/45°



Finish	Dimension	Code	Index	IP	EP	g
BLK	3/8	10.003	4,75	10	500	42
GAL	3/8	10.003	5,95	10	500	44
BLK	1/2	10.004	4,60	10	360	62
GAL	1/2	10.004	5,85	10	360	65
BLK	3/4	10.006	6,00	10	200	98
GAL	3/4	10.006	7,40	10	200	102
BLK	1	10.007	9,15	10	120	159
GAL	1	10.007	11,50	10	120	164

## TEE

Te  
Tê  
T  
Tê  
Ti

**130**  
ISO B1



Finish	Dimension	Code	Index	IP	EP	g
BLK	1/4	44.002	3,60	10	400	68
GAL	1/4	44.002	4,55	10	400	70
BLK	3/8	44.003	3,20	10	270	80
GAL	3/8	44.003	3,90	10	270	81
BLK	1/2	44.004	2,10	10	170	113
GAL	1/2	44.004	2,60	10	170	118
BLK	3/4	44.006	3,60	10	100	180
GAL	3/4	44.006	4,50	10	100	191
BLK	1	44.007	5,25	5	60	277
GAL	1	44.007	6,60	5	60	326
BLK	1 1/4	44.008	9,35	-	35	455
GAL	1 1/4	44.008	11,50	-	35	464
BLK	1 1/2	44.009	14,25	-	30	568
GAL	1 1/2	44.009	17,80	-	30	588
BLK	2	44.010	20,50	-	15	865
GAL	2	44.010	25,05	-	15	902
BLK	2 1/2	44.011	46,25	-	10	1538
GAL	2 1/2	44.011	57,50	-	10	1587
BLK	3	44.012	61,85	-	6	2006
GAL	3	44.012	76,85	-	6	2065
BLK	4	44.014	119,00	-	3	3724
GAL	4	44.014	150,55	-	3	3830
BLK	5	44.015	274,78	-	2	5770
GAL	5	44.015	343,49	-	2	6051
BLK	6 *	44.016	577,41	-	1	10435
GAL	6 *	44.016	828,48	-	1	10740

## TEE REDUCING

Te de Reduccion  
Tê de Reducao  
T, Reduziert  
Tê Réduit  
Ti di Riduzione

**130R**  
ISO B1



Finish	Dimension			Code	Index	IP	EP	g
	1	2	3					
BLK	3/8	1/4	3/8	45.023	6,50	10	350	69
GAL	3/8	1/4	3/8	45.023	8,20	10	350	71
BLK	1/2	1/4	1/2	45.025	5,10	10	200	92
GAL	1/2	1/4	1/2	45.025	6,50	10	200	96
BLK	1/2	3/8	1/2	45.026	4,20	10	200	118
GAL	1/2	3/8	1/2	45.026	5,05	10	200	129
BLK	3/4	3/8	3/4	45.028	5,00	10	140	158
GAL	3/4	3/8	3/4	45.028	6,20	10	140	168
BLK	3/4	1/2	3/4	45.029	3,75	10	120	173
GAL	3/4	1/2	3/4	45.029	4,70	10	120	181
BLK	1	3/8	1	45.031	8,35	10	100	195
GAL	1	3/8	1	45.031	10,55	10	100	203
BLK	1	1/2	1	45.032	4,95	10	90	225
GAL	1	1/2	1	45.032	6,15	10	90	233
BLK	1	3/4	1	45.033	5,35	10	80	237
GAL	1	3/4	1	45.033	6,60	10	80	252
BLK	1 1/4	1/2	1 1/4	45.035	8,20	-	60	277
GAL	1 1/4	1/2	1 1/4	45.035	10,30	-	60	307

# TEE REDUCING

Te de Reducción  
Tê de Redução  
T, Reduziert  
Té Réduit  
Ti di Riduzione



Finish	Dimension			Code	Index	IP	EP	g
	1	2	3					
BLK	1¼ x	¾ x	1¼	45.036	8,90	-	50	306
GAL	1¼ x	¾ x	1¼	45.036	10,90	-	50	328
BLK	1¼ x	1 x	1¼	45.037	9,75	-	40	345
GAL	1¼ x	1 x	1¼	45.037	12,15	-	40	373
BLK	1½ x	½ x	1½	45.039	11,00	-	45	371
GAL	1½ x	½ x	1½	45.039	13,85	-	45	390
BLK	1½ x	¾ x	1½	45.040	11,85	-	45	393
GAL	1½ x	¾ x	1½	45.040	15,00	-	45	405
BLK	1½ x	1 x	1½	45.041	12,90	-	35	432
GAL	1½ x	1 x	1½	45.041	16,20	-	35	451
BLK	1½ x	1¼ x	1½	45.042	17,45	-	30	536
GAL	1½ x	1¼ x	1½	45.042	22,05	-	30	556
BLK	2 x	½ x	2	45.043	16,15	-	25	536
GAL	2 x	½ x	2	45.043	20,45	-	25	545
BLK	2 x	¾ x	2	45.044	21,00	-	30	555
GAL	2 x	¾ x	2	45.044	26,60	-	30	589
BLK	2 x	1 x	2	45.045	16,55	-	25	655
GAL	2 x	1 x	2	45.045	20,65	-	25	667
BLK	2 x	1¼ x	2	45.046	21,00	-	20	690
GAL	2 x	1¼ x	2	45.046	26,60	-	20	729
BLK	2 x	1½ x	2	45.047	24,65	-	20	768
GAL	2 x	1½ x	2	45.047	30,65	-	20	793
BLK	2½ x	1 x	2½	45.048	33,35	-	18	924
GAL	2½ x	1 x	2½	45.048	42,20	-	18	933
BLK	2½ x	1¼ x	2½*	45.049	45,70	-	15	1132
GAL	2½ x	1¼ x	2½*	45.049	57,95	-	15	1176
BLK	2½ x	1½ x	2½*	45.050	39,90	-	12	1235
GAL	2½ x	1½ x	2½*	45.050	50,45	-	12	1257
BLK	2½ x	2 x	2½*	45.051	44,90	-	12	1426
GAL	2½ x	2 x	2½*	45.051	56,75	-	12	1473
BLK	3 x	1 x	3*	45.052	57,30	-	9	1246
GAL	3 x	1 x	3*	45.052	69,20	-	9	1276
BLK	3 x	1¼ x	3*	45.053	65,90	-	8	1272
GAL	3 x	1¼ x	3*	45.053	79,55	-	8	1228
BLK	3 x	1½ x	3*	45.054	66,05	-	9	1468
GAL	3 x	1½ x	3*	45.054	79,75	-	9	1509
BLK	3 x	2 x	3*	45.055	61,35	-	8	1637
GAL	3 x	2 x	3*	45.055	74,10	-	8	1716
BLK	3 x	2½ x	3*	45.056	69,15	-	8	1864
GAL	3 x	2½ x	3*	45.056	87,65	-	8	1931
BLK	4 x	2 x	4	45.058	108,05	-	5	2266
GAL	4 x	2 x	4	45.058	130,55	-	5	2347
BLK	4 x	2½ x	4	45.059	120,18	-	5	2642
GAL	4 x	2½ x	4	45.059	166,75	-	5	2692
BLK	4 x	3 x	4*	45.060	104,15	-	4	3167
GAL	4 x	3 x	4*	45.060	138,80	-	4	3307
BLK	¾ x	1 x	¾	46.233	7,47	10	80	260
GAL	¾ x	1 x	¾	46.233	9,14	10	80	270
BLK	¾ x	½ x	½	47.129	4,10	10	130	174
GAL	¾ x	½ x	½	47.129	5,05	10	130	179
BLK	1¼ x	½ x	1	47.135	9,65	-	60	273
GAL	1¼ x	½ x	1	47.135	12,00	-	60	284
BLK	1¼ x	1 x	1	47.137	11,00	-	60	273
GAL	1¼ x	1 x	1	47.137	13,70	-	60	320
BLK	1½ x	½ x	1¼	47.139	12,65	-	50	349
GAL	1½ x	½ x	1¼	47.139	16,05	-	50	376
BLK	1½ x	1 x	1¼	47.141	14,60	-	45	442
GAL	1½ x	1 x	1¼	47.141	18,35	-	45	460
BLK	2 x	1 x	1½	47.146	23,20	-	20	526
GAL	2 x	1 x	1½	47.146	29,20	-	20	535
BLK	¾ x	¾ x	½	48.124	4,75	10	130	161
GAL	¾ x	¾ x	½	48.124	6,00	10	130	172
BLK	1¼ x	1¼ x	1	48.137	12,20	-	40	400
GAL	1¼ x	1¼ x	1	48.137	15,55	-	40	415

\*Banded, only

## TWIN ELBOW

Te de Curva Doble  
Tê de Curva Dupla  
Zweibogen-T  
Tê à deux Courbes  
Ti a due Curve

**132**  
ISO E2



Finish	Dimension	Code	Index	IP	EP	g
BLK	1/2	55.004	11,20	10	100	181
GAL	1/2	55.004	13,95	10	100	194
BLK	3/4	55.006	12,15	-	70	318
GAL	3/4	55.006	15,40	-	70	334

## TEE FOR HYDRANT

Te para Hidrante  
Tê para Hidrante

**138**



Finish	Dimension	Code	Index	IP	EP	g
GAL	4 x 2 1/2	49.059	*	1	5	2560

\* Prices Available Upon Request

\* Precios Bajo Consulta

\* Preços Sob Consulta

## 45° TEE

Te 45°  
Tê 45°  
T 45°  
Tê 45°  
Ti 45°

**165**



Finish	Dimension	Code	Index	IP	EP	g
BLK	1/2	54.004	12,45	10	170	140
GAL	1/2	54.004	15,55	10	170	150
BLK	3/4	54.006	14,25	10	90	228
GAL	3/4	54.006	17,90	10	90	239
BLK	1	54.007	21,30	5	50	381
GAL	1	54.007	26,80	5	50	403
BLK	1 1/4	54.008	26,25	-	25	562
GAL	1 1/4	54.008	33,20	-	25	591
BLK	1 1/2	54.009	35,70	-	20	719
GAL	1 1/2	54.009	44,60	-	20	776
BLK	2	54.010	52,65	-	12	1250
GAL	2	54.010	66,45	-	12	1302
BLK	2 1/2	54.011	90,44	-	8	1714
GAL	2 1/2	54.011	129,01	-	8	1784
BLK	3	54.012	218,56	-	4	2822
GAL	3	54.012	311,25	-	4	2903
BLK	4	54.014	313,34	-	2	4812
GAL	4	54.014	329,38	-	2	5020

## CROSSER

Cruce  
Cruzeta  
Kreuz  
Croix  
Croce

**180**  
ISO C1



Finish	Dimension	Code	Index	IP	EP	g
BLK	1/4	18.002	7,05	10	330	72
GAL	1/4	18.002	8,60	10	330	75
BLK	3/8	18.003	7,40	10	220	103
GAL	3/8	18.003	9,35	10	220	108
BLK	1/2	18.004	7,30	10	150	166
GAL	1/2	18.004	9,15	10	150	172
BLK	3/4	18.006	11,20	10	90	224
GAL	3/4	18.006	13,70	10	90	235
BLK	1	18.007	13,70	-	50	376
GAL	1	18.007	16,95	-	50	391
BLK	1 1/4	18.008	18,15	-	30	599
GAL	1 1/4	18.008	22,75	-	30	618
BLK	1 1/2	18.009	24,05	-	20	760
GAL	1 1/2	18.009	30,35	-	20	799
BLK	2	18.010	35,80	-	10	1097
GAL	2	18.010	45,30	-	10	1143
BLK	2 1/2	18.011	81,00	-	8	1912
GAL	2 1/2	18.011	102,50	-	8	1973
BLK	3	18.012	93,25	-	5	2649
GAL	3	18.012	118,10	-	5	2699

## SIDE OUTLET ELBOWS

Tricodo  
Cotovelo Saída Lateral  
Winkelverteiler  
Distributeur à Coude  
Distribuzione a Gomito

**221**  
ISO Za1



Finish	Dimension	Code	Index	IP	EP	g
BLK	1/2	15.004	7,00	10	170	131
GAL	1/2	15.004	8,55	10	170	137
BLK	3/4	15.006	8,70	10	100	204
GAL	3/4	15.006	13,70	10	100	210
BLK	1	15.007	14,55	-	60	325
GAL	1	15.007	18,10	-	60	333
BLK	1 1/4	15.008	25,50	-	35	521
GAL	1 1/4	15.008	32,10	-	35	526
BLK	1 1/2	15.009	36,20	-	25	670
GAL	1 1/2	15.009	45,60	-	25	691
BLK	2	15.010	55,10	-	18	1031
GAL	2	15.010	69,75	-	18	1074

## SOCKET REDUCING

Cupla de Reducción  
Luva de Redução  
Muffe, Reduziert  
Manchon Réduit  
Manicotto di Riduzione

**240**  
ISO M2



Finish	Dimension	Code	Index	IP	EP	g
BLK	3/8 x 1/4	32.023	2,95	10	650	36
GAL	3/8 x 1/4	32.023	3,80	10	650	37
BLK	1/2 x 1/4	32.025	3,15	10	430	54
GAL	1/2 x 1/4	32.025	3,95	10	430	58
BLK	1/2 x 3/8	32.026	2,75	10	400	54
GAL	1/2 x 3/8	32.026	3,25	10	400	65
BLK	3/4 x 3/8	32.028	3,60	10	250	93
GAL	3/4 x 3/8	32.028	4,60	10	250	95
BLK	3/4 x 1/2	32.029	3,00	10	250	90
GAL	3/4 x 1/2	32.029	3,85	10	250	95
BLK	1 x 3/8	32.031	5,05	10	200	123
GAL	1 x 3/8	32.031	6,35	10	200	129
BLK	1 x 1/2	32.032	3,90	10	120	127
GAL	1 x 1/2	32.032	4,85	10	120	123
BLK	1 x 3/4	32.033	3,50	10	150	140
GAL	1 x 3/4	32.033	4,40	10	150	142
BLK	1 1/4 x 1/2	32.035	7,15	10	100	208
GAL	1 1/4 x 1/2	32.035	9,30	10	100	213
BLK	1 1/4 x 3/4	32.036	6,45	10	110	214
GAL	1 1/4 x 3/4	32.036	8,20	10	110	208
BLK	1 1/4 x 1	32.037	6,35	-	90	227
GAL	1 1/4 x 1	32.037	7,95	-	90	229

## SOCKET REDUCING

Cupla de Reducción  
Luva de Redução  
Muffe, Reduziert  
Manchon Réduit  
Manicotto di Riduzione

Finish	Dimension	Code	Index	IP	EP	g
BLK	1½ x ¾	32.040	10,00	-	75	261
GAL	1½ x ¾	32.040	12,70	-	75	284
BLK	1½ x 1	32.041	7,75	-	75	247
GAL	1½ x 1	32.041	9,65	-	75	256
BLK	1½ x 1¼	32.042	8,40	-	75	253
GAL	1½ x 1¼	32.042	10,65	-	75	260
BLK	2 x 1	32.045	14,90	-	55	354
GAL	2 x 1	32.045	19,00	-	55	370
BLK	2 x 1¼	32.046	13,40	-	45	381
GAL	2 x 1¼	32.046	16,80	-	45	401
BLK	2 x 1½	32.047	12,65	-	45	388
GAL	2 x 1½	32.047	15,90	-	45	405
BLK	2½ x 1¼	32.049	33,15	-	30	574
GAL	2½ x 1¼	32.049	41,85	-	30	602
BLK	2½ x 1½	32.050	40,00	-	28	558
GAL	2½ x 1½	32.050	50,65	-	28	579
BLK	2½ x 2	32.051	34,65	-	30	605
GAL	2½ x 2	32.051	43,00	-	30	620
BLK	3 x 1½	32.054	36,70	-	20	763
GAL	3 x 1½	32.054	46,40	-	20	795
BLK	3 x 2*	32.055	53,65	-	20	885
GAL	3 x 2*	32.055	67,80	-	20	912
BLK	3 x 2½	32.056	61,15	-	20	870
GAL	3 x 2½	32.056	77,15	-	20	870
BLK	4 x 2*	32.058	92,65	-	12	1524
GAL	4 x 2*	32.058	117,30	-	12	1535
BLK	4 x 2½*	32.059	97,00	-	12	1588
GAL	4 x 2½*	32.059	122,60	-	12	1595
BLK	4 x 3*	32.060	99,30	-	12	1645
GAL	4 x 3*	32.060	125,80	-	12	1687

\*Banded, only

## REDUCING BUSH

Buje de Reduccion  
Bucha de Redução  
Reduziernippel  
Mamelon Réduit  
Niplo di Riduzione

**241**  
ISO N4



Finish	Dimension	Code	Index	IP	EP	g
BLK	¾ x ¼	01.023	1,95	10	1000	16
GAL	¾ x ¼	01.023	2,50	10	1000	17
BLK	½ x ¼	01.025	1,55	10	800	34
GAL	½ x ¼	01.025	1,95	10	800	35
BLK	½ x ⅜	01.026	1,45	10	800	25
GAL	½ x ⅜	01.026	1,95	10	800	27
BLK	¾ x ¼	01.027	2,85	10	450	69
GAL	¾ x ¼	01.027	3,55	10	450	72
BLK	¾ x ⅜	01.028	2,20	10	450	61
GAL	¾ x ⅜	01.028	2,70	10	450	63
BLK	¾ x ½	01.029	1,55	10	450	48
GAL	¾ x ½	01.029	2,10	10	450	50
BLK	1 x ⅜	01.031	3,60	10	260	104
GAL	1 x ⅜	01.031	4,45	10	260	107
BLK	1 x ½	01.032	2,30	10	260	100
GAL	1 x ½	01.032	2,95	10	260	102
BLK	1 x ¾	01.033	2,10	10	260	83
GAL	1 x ¾	01.033	2,75	10	260	86
BLK	1¼ x ½	01.035	4,20	10	160	193
GAL	1¼ x ½	01.035	4,95	10	160	200
BLK	1¼ x ¾	01.036	3,55	10	160	176
GAL	1¼ x ¾	01.036	4,40	10	160	183
BLK	1¼ x 1	01.037	2,70	10	150	144
GAL	1¼ x 1	01.037	3,25	10	150	146
BLK	1½ x ½	01.039	5,15	10	120	260
GAL	1½ x ½	01.039	6,55	10	120	261
BLK	1½ x ¾	01.040	5,90	10	120	233
GAL	1½ x ¾	01.040	7,25	10	120	236
BLK	1½ x 1	01.041	3,90	10	120	203
GAL	1½ x 1	01.041	4,85	10	120	210
BLK	1½ x 1¼	01.042	4,00	10	120	122
GAL	1½ x 1¼	01.042	4,95	10	120	124



## REDUCING BUSH

Buje de Reducción  
Bucha de Redução  
Reduziernippel  
Mamelon Réduit  
Niplo di Riduzione

Finish	Dimension	Code	Index	IP	EP	g
BLK	2 x 1/2	01.043	10,45	-	75	373
GAL	2 x 1/2	01.043	13,20	-	75	412
BLK	2 x 3/4	01.044	10,35	-	75	395
GAL	2 x 3/4	01.044	13,05	-	75	405
BLK	2 x 1	01.045	8,50	-	80	411
GAL	2 x 1	01.045	10,70	-	80	416
BLK	2 x 1 1/4	01.046	8,10	-	80	347
GAL	2 x 1 1/4	01.046	10,20	-	80	352
BLK	2 x 1 1/2	01.047	7,25	-	80	300
GAL	2 x 1 1/2	01.047	9,15	-	80	288
BLK	2 1/2 x 1	01.048	16,90	-	40	609
GAL	2 1/2 x 1	01.048	21,05	-	40	622
BLK	2 1/2 x 1 1/4	01.049	19,40	-	40	638
GAL	2 1/2 x 1 1/4	01.049	24,35	-	40	644
BLK	2 1/2 x 1 1/2	01.050	18,50	-	40	580
GAL	2 1/2 x 1 1/2	01.050	23,00	-	40	604
BLK	2 1/2 x 2	01.051	13,95	-	40	480
GAL	2 1/2 x 2	01.051	17,60	-	40	500
BLK	3 x 1 1/2	01.054	24,40	-	29	894
GAL	3 x 1 1/2	01.054	30,60	-	29	921
BLK	3 x 2	01.055	18,30	-	25	955
GAL	3 x 2	01.055	22,70	-	25	969
BLK	3 x 2 1/2	01.056	20,65	-	25	581
GAL	3 x 2 1/2	01.056	25,70	-	25	642
BLK	4 x 2	01.058	52,25	-	14	1670
GAL	4 x 2	01.058	66,10	-	14	1711
BLK	4 x 2 1/2	01.059	38,80	-	14	1723
GAL	4 x 2 1/2	01.059	49,20	-	14	1752
BLK	4 x 3	01.060	37,20	-	18	1448
GAL	4 x 3	01.060	47,20	-	18	1360
BLK	5 x 4	01.066	127,54	-	8	2017
GAL	5 x 4	01.066	198,45	-	8	2049
BLK	6 x 4	01.071	190,03	-	6	3794
GAL	6 x 4	01.071	294,53	-	6	3854
BLK	6 x 5	01.072	199,49	-	8	2737
GAL	6 x 5	01.072	309,22	-	8	2749

## HEXAGON NIPPLE REDUCING

Niple Hexagonal de Reducción  
Niple Duplo de Redução  
Doppelnippel, Reduziert  
Mamelon Réduit  
Niplo Dopplo di Riduzione

**245**  
ISO N8



Finish	Dimension	Code	Index	IP	EP	g
BLK	3/8 x 1/4	39.023	3,00	10	800	33
GAL	3/8 x 1/4	39.023	3,95	10	800	33
BLK	1/2 x 1/4	39.025	4,20	10	540	43
GAL	1/2 x 1/4	39.025	4,95	10	540	46
BLK	1/2 x 3/8	39.026	3,60	10	450	47
GAL	1/2 x 3/8	39.026	4,55	10	450	51
BLK	3/4 x 3/8	39.028	6,50	10	300	80
GAL	3/4 x 3/8	39.028	8,15	10	300	83
BLK	3/4 x 1/2	39.029	3,25	10	310	89
GAL	3/4 x 1/2	39.029	4,00	10	310	94
BLK	1 x 1/2	39.032	6,35	10	180	133
GAL	1 x 1/2	39.032	8,05	10	180	141
BLK	1 x 3/4	39.033	3,60	10	180	138
GAL	1 x 3/4	39.033	4,55	10	180	149
BLK	1 1/4 x 3/4	39.036	8,50	5	110	188
GAL	1 1/4 x 3/4	39.036	10,50	5	110	191
BLK	1 1/4 x 1	39.037	5,95	5	100	202
GAL	1 1/4 x 1	39.037	7,25	5	100	209
BLK	1 1/2 x 3/4	39.040	8,50	-	90	208
GAL	1 1/2 x 3/4	39.040	10,65	-	90	215
BLK	1 1/2 x 1	39.041	13,40	-	95	243
GAL	1 1/2 x 1	39.041	16,95	-	95	246
BLK	1 1/2 x 1 1/4	39.042	7,20	-	80	246
GAL	1 1/2 x 1 1/4	39.042	9,15	-	80	256
BLK	2 x 1	39.045	12,10	-	60	428
GAL	2 x 1	39.045	15,25	-	60	434

## HEXAGON NIPPLE REDUCING

Niple Hexagonal de Reducción  
Niple Duplo de Redução  
Doppelnippel, Reduziert  
Mamelon Réduit  
Nipplo Dopplo di Riduzione

Finish	Dimension	Code	Index	IP	EP	g
BLK	2 x 1¼	39.046	15,20	-	50	364
GAL	2 x 1¼	39.046	19,00	-	50	368
BLK	2 x 1½	39.047	13,75	-	45	414
GAL	2 x 1½	39.047	17,35	-	45	422
BLK	2½ x 2	39.051	33,45	-	36	665
GAL	2½ x 2	39.051	41,65	-	36	661
BLK	3 x 2	39.055	40,60	-	20	909
GAL	3 x 2	39.055	51,30	-	20	912
BLK	3 x 2½	39.056	53,20	-	20	898
GAL	3 x 2½	39.056	67,35	-	20	926

## SOCKET REDUCING

Cupla de Reducción  
Luva de Redução MF  
Muffe, Reduziert  
Manchon Réduit  
Manicotto di Riduzione

**246**  
ISO M4



Finish	Dimension	Code	Index	IP	EP	g
BLK	¾ x ¼	35.023	2,75	10	700	34
GAL	¾ x ¼	35.023	3,45	10	700	36
BLK	½ x ¼	35.025	3,75	10	450	57
GAL	½ x ¼	35.025	4,60	10	450	61
BLK	½ x ⅜	35.026	2,95	10	420	57
GAL	½ x ⅜	35.026	3,65	10	420	60
BLK	¾ x ⅜	35.028	5,00	10	280	87
GAL	¾ x ⅜	35.028	6,20	10	280	91
BLK	¾ x ½	35.029	3,15	10	260	86
GAL	¾ x ½	35.029	3,95	10	260	90
BLK	1 x ½	35.032	4,90	10	180	135
GAL	1 x ½	35.032	6,05	10	180	137
BLK	1 x ¾	35.033	5,05	10	170	146
GAL	1 x ¾	35.033	6,40	10	170	154
BLK	1¼ x ¾	35.036	9,20	5	105	209
GAL	1¼ x ¾	35.036	11,50	5	105	220
BLK	1¼ x 1	35.037	5,85	5	100	215
GAL	1¼ x 1	35.037	7,10	5	100	224
BLK	1½ x 1	35.041	11,00	-	75	275
GAL	1½ x 1	35.041	13,70	-	75	287
BLK	1½ x 1¼	35.042	9,65	-	70	264
GAL	1½ x 1¼	35.042	12,00	-	70	296
BLK	2 x 1	35.045	18,50	-	55	358
GAL	2 x 1	35.045	23,00	-	55	371
BLK	2 x 1¼	35.046	15,45	-	45	378
GAL	2 x 1¼	35.046	19,40	-	45	391
BLK	2 x 1½	35.047	16,15	-	45	391
GAL	2 x 1½	35.047	20,45	-	45	405

## ADAPTADOR FOR CONCRETE WATER - RESERVOIR

Adaptador para Tanque de Água  
Adaptador para Caixa D'Água de Concreto - 150mm

**250**



Finish	Dimension	Code	Index	IP	EP	g
GAL	2	91.010	*	-	19	1107
GAL	2½	91.011	*	-	12	1461
GAL	3	91.012	*	-	8	1880
GAL	4	91.014	*	-	5	2933

\* Prices Available Upon Request

\* Precios Bajo Consulta

\* Preços Sob Consulta

## ADAPTADOR FOR CONCRETE WATER - RESERVOIR

Adaptador para Tanque de Água  
Adaptador para Caixa D'Água de Concreto - 200mm

# 250a



Finish	Dimension	Code	Index	IP	EP	g
GAL	2	92.010	*	-	12	1425
GAL	2½	92.011	*	-	10	1790
GAL	3	92.012	*	-	5	2411
GAL	4	92.014	*	-	3	3860

\* Prices Available Upon Request

\* Precios Bajo Consulta

\* Preços Sob Consulta

## SOCKET

Cupla  
Luva  
Muffe  
Manchon  
Manicotto

# 270

ISO M2



Finish	Dimension	Code	Index	IP	EP	g
BLK	¼	31.002	2,35	10	600	28
GAL	¼	31.002	3,10	10	600	31
BLK	⅜	31.003	2,20	10	500	39
GAL	⅜	31.003	2,65	10	500	41
BLK	½	31.004	1,75	10	340	58
GAL	½	31.004	2,15	10	340	62
BLK	¾	31.006	2,30	10	220	99
GAL	¾	31.006	2,95	10	220	104
BLK	1	31.007	3,00	10	140	158
GAL	1	31.007	3,90	10	140	164
BLK	1¼	31.008	4,95	-	80	224
GAL	1¼	31.008	6,15	-	80	231
BLK	1½	31.009	6,95	-	60	264
GAL	1½	31.009	8,85	-	60	286
BLK	2	31.010	10,45	-	35	408
GAL	2	31.010	13,15	-	35	431
BLK	2½	31.011	29,35	-	24	695
GAL	2½	31.011	36,40	-	24	712
BLK	3	31.012	35,15	-	18	1066
GAL	3	31.012	43,75	-	18	1113
BLK	4	31.014	80,75	-	8	1644
GAL	4	31.014	102,10	-	8	1672
BLK	5	31.015	223,21	-	5	2741
GAL	5	31.015	311,04	-	5	3015
BLK	6	31.016	274,84	-	3	4672
GAL	6	31.016	384,46	-	3	4747

## SOCKET, RIGHT AND LEFT HAND THREAD

Manguito Rosca Derecha e Izquierda  
Luva com Rosca Esquerda/Direita  
Muffe mit Recht-und Linksgewinde  
Manchon Filetage Droite/Gauche  
Manicotto com Filettatura Destra/Sinistra

# 271

ISO M2 R-L



Finish	Dimension	Code	Index	IP	EP	g
BLK	⅜	36.003	3,00	-	300	40
GAL	⅜	36.003	3,80	-	300	43
BLK	½	36.004	2,75	-	200	56
GAL	½	36.004	3,40	-	200	65
BLK	¾	36.006	3,55	-	140	111
GAL	¾	36.006	4,55	-	140	109
BLK	1	36.007	4,70	-	90	153
GAL	1	36.007	5,90	-	90	166
BLK	1¼	36.008	9,00	-	60	233
GAL	1¼	36.008	11,30	-	60	233
BLK	1½	36.009	9,80	-	40	285
GAL	1½	36.009	12,35	-	40	294
BLK	2	36.010	17,55	-	25	420
GAL	2	36.010	22,05	-	25	430

## HEXAGON NIPPLE

Niple Hexagonal  
Niple Duplo  
Doppelnippel  
Mamelon  
Niplo Dopplo

**280**  
ISO N8



Finish	Dimension	Code	Index	IP	EP	g
BLK	1/4	38.002	2,70	10	600	30
GAL	1/4	38.002	3,20	10	600	31
BLK	3/8	38.003	2,95	10	650	38
GAL	3/8	38.003	3,65	10	650	40
BLK	1/2	38.004	1,55	10	400	58
GAL	1/2	38.004	2,00	10	400	68
BLK	3/4	38.006	2,10	10	270	105
GAL	3/4	38.006	2,60	10	270	108
BLK	1	38.007	2,90	10	150	174
GAL	1	38.007	3,75	10	150	178
BLK	1 1/4	38.008	4,95	5	80	248
GAL	1 1/4	38.008	6,15	5	80	256
BLK	1 1/2	38.009	5,85	-	70	329
GAL	1 1/2	38.009	7,10	-	70	332
BLK	2	38.010	10,25	-	35	575
GAL	2	38.010	12,80	-	35	585
BLK	2 1/2	38.011	18,50	-	24	928
GAL	2 1/2	38.011	23,00	-	24	953
BLK	3	38.012	22,40	-	15	940
GAL	3	38.012	27,70	-	15	946
BLK	4	38.014	80,75	-	6	1869
GAL	4	38.014	102,10	-	6	1888
BLK	5	38.015	104,34	-	4	3140
GAL	5	38.015	140,87	-	4	3192
BLK	6	38.016	219,92	-	4	3911
GAL	6	38.016	309,95	-	4	3930

## PLUG, BEADED

Tapón Macho con Reborde  
Bujão com Rebordo  
Stofen mit Rand  
Bouchon avec Collet  
Tappo com Bordo

**290**  
ISO T9



Finish	Dimension	Code	Index	IP	EP	g
BLK	1/4	03.002	1,40	10	1500	22
GAL	1/4	03.002	1,85	10	1500	22
BLK	3/8	03.003	1,25	10	1000	36
GAL	3/8	03.003	1,50	10	1000	37
BLK	1/2	03.004	1,25	10	600	50
GAL	1/2	03.004	1,55	10	600	51
BLK	3/4	03.006	1,75	10	360	88
GAL	3/4	03.006	2,10	10	360	90
BLK	1	03.007	1,95	10	210	145
GAL	1	03.007	2,30	10	210	148
BLK	1 1/4	03.008	3,40	10	130	208
GAL	1 1/4	03.008	4,25	10	130	212
BLK	1 1/2	03.009	4,30	-	100	262
GAL	1 1/2	03.009	5,20	-	100	264
BLK	2	03.010	7,60	-	50	419
GAL	2	03.010	9,35	-	50	429
BLK	2 1/2	03.011	16,10	-	30	691
GAL	2 1/2	03.011	20,40	-	30	707
BLK	3	03.012	20,85	-	25	1012
GAL	3	03.012	26,30	-	25	1059

## PLUG, PLAIN

Tapón Macho sin Borde  
Bujão  
Stopfen ohne Rand  
Bouchon sans Collet  
Tappo Senza Bordo

**291**  
ISO T8

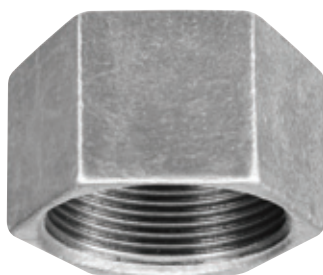


Finish	Dimension	Code	Index	IP	EP	g
BLK	1/4	02.002	1,55	10	1500	12
GAL	1/4	02.002	2,00	10	1500	12
BLK	3/8	02.003	1,40	10	1500	21
GAL	3/8	02.003	1,90	10	1500	22
BLK	1/2	02.004	1,30	10	800	35
GAL	1/2	02.004	1,80	10	800	36
BLK	3/4	02.006	2,00	10	530	51
GAL	3/4	02.006	2,65	10	530	55
BLK	1	02.007	2,55	10	380	81
GAL	1	02.007	3,10	10	380	83
BLK	1 1/4	02.008	3,50	10	190	137
GAL	1 1/4	02.008	4,45	10	190	138
BLK	1 1/2	02.009	6,00	10	160	159
GAL	1 1/2	02.009	7,40	10	160	161
BLK	2	02.010	8,20	-	80	295
GAL	2	02.010	10,20	-	80	303
BLK	2 1/2	02.011	15,55	-	50	517
GAL	2 1/2	02.011	19,55	-	50	538
BLK	3	02.012	19,00	-	30	771
GAL	3	02.012	23,85	-	30	769
BLK	4	02.014	65,80	-	18	1528
GAL	4	02.014	83,30	-	18	1548

## CAP

Tapón Hexagonal  
Tampão Sextavado  
Kappe  
Bouchon  
Calotta

**300**  
ISO T1



Finish	Dimension	Code	Index	IP	EP	g
BLK	1/2	41.004	1,95	10	500	56
GAL	1/2	41.004	2,45	10	500	59
BLK	3/4	41.006	2,30	10	350	87
GAL	3/4	41.006	2,95	10	350	91
BLK	1	41.007	2,80	10	200	140
GAL	1	41.007	3,45	10	200	147
BLK	1 1/4	41.008	4,30	10	100	215
GAL	1 1/4	41.008	5,20	10	100	220
BLK	1 1/2	41.009	5,30	-	100	259
GAL	1 1/2	41.009	6,50	-	100	264
BLK	2	41.010	9,80	-	70	416
GAL	2	41.010	12,30	-	70	417
BLK	2 1/2	41.011	17,90	-	40	779
GAL	2 1/2	41.011	22,35	-	40	771
BLK	3	41.012	19,55	-	28	1009
GAL	3	41.012	24,40	-	28	1029
BLK	4	41.014	42,05	-	18	1675
GAL	4	41.014	53,40	-	18	1892
BLK	6	41.016	81,72	-	6	3648
GAL	6	41.016	117,09	-	6	3803

## CAP, ROUND

Tapón Hembra  
Tampão  
Kappe  
Bouchon Femelle Ronde  
Calotta

**301**  
ISO T1



Finish	Dimension	Code	Index	IP	EP	g
BLK	1/4	42.002	1,72	10	1000	19
GAL	1/4	42.002	2,09	10	1000	20
BLK	3/8	42.003	1,51	10	1000	26
GAL	3/8	42.003	1,86	10	1000	28
BLK	1/2	42.004	1,74	10	500	50
GAL	1/2	42.004	2,21	10	500	54
BLK	3/4	42.006	2,19	10	350	83
GAL	3/4	42.006	2,56	10	350	87
BLK	1	42.007	2,40	10	200	105
GAL	1	42.007	3,14	10	200	107
BLK	1 1/4	42.008	3,92	10	150	158
GAL	1 1/4	42.008	5,02	10	150	172
BLK	1 1/2	42.009	5,02	-	120	211
GAL	1 1/2	42.009	6,17	-	120	231
BLK	2	42.010	9,25	-	70	310
GAL	2	42.010	11,60	-	70	323

## CAP, ROUND

Tapón Hembra  
Tampão  
Kappe  
Bouchon Femelle Ronde  
Calotta

Finish	Dimension	Code	Index	IP	EP	g
BLK	2½	42.011	16,82	-	40	548
GAL	2½	42.011	21,21	-	40	557
BLK	3	42.012	18,50	-	28	738
GAL	3	42.012	23,36	-	28	812
BLK	4	42.014	41,07	-	18	1314
GAL	4	42.014	50,16	-	18	1349

## BACKNUT, RESESSED

Contratuercas  
Contraporca  
Gegenmutter mit Aussparung  
Contre-écrou, Évidé  
Controdado com Scanalatura

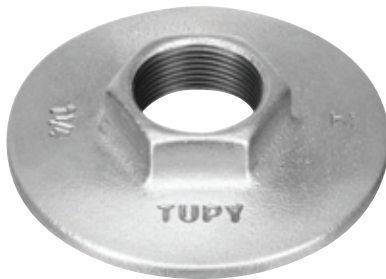


**312**  
ISO P4

Finish	Dimension	Code	Index	IP	EP	g
BLK	¾	06.003	3,50	10	900	21
GAL	¾	06.003	4,55	10	900	23
BLK	½	06.004	1,90	10	800	29
GAL	½	06.004	2,50	10	800	30
BLK	¾	06.006	2,30	10	650	35
GAL	¾	06.006	2,75	10	650	36
BLK	1	06.007	2,80	10	400	63
GAL	1	06.007	3,45	10	400	65
BLK	1¼	06.008	4,25	10	250	96
GAL	1¼	06.008	5,10	10	250	99
BLK	1½	06.009	4,85	-	200	104
GAL	1½	06.009	6,05	-	200	110
BLK	2	06.010	9,70	-	175	165
GAL	2	06.010	12,00	-	175	174
BLK	2½	06.011	10,55	-	84	348
GAL	2½	06.011	27,64	-	84	355
BLK	3	06.012	21,47	-	60	399
GAL	3	06.012	28,01	-	60	413

## FLANGE

Brida com Sextavado  
Flange com Sextavado  
Gewindeflansch  
Bride  
Flangia



**321**  
ISO P4

Finish	Dimension	Code	Index	IP	EP	g
BLK	¼	99.002	9,46	10	330	126
GAL	¼	99.002	12,12	10	330	137
BLK	¾	99.003	11,97	10	210	145
GAL	¾	99.003	15,31	10	210	162
BLK	½	99.004	8,90	10	170	184
GAL	½	99.004	11,05	10	170	189
BLK	¾	99.006	10,80	10	120	246
GAL	¾	99.006	13,65	10	120	262
BLK	1	99.007	12,55	-	90	333
GAL	1	99.007	15,80	-	90	350
BLK	1¼	99.008	16,65	-	50	523
GAL	1¼	99.008	20,95	-	50	553
BLK	1½	99.009	20,30	-	45	675
GAL	1½	99.009	25,50	-	45	674
BLK	2	99.010	24,55	-	30	904
GAL	2	99.010	30,80	-	30	929
BLK	2½	99.011	34,90	-	20	1333
GAL	2½	99.011	43,47	-	20	1353
BLK	3	99.012	41,90	-	12	2011
GAL	3	99.012	52,41	-	12	1954
BLK	4	99.014	76,34	-	8	2788
GAL	4	99.014	95,36	-	8	2807
BLK	5	99.015	97,92	-	4	3814
GAL	5	99.015	132,19	-	4	4190
BLK	6	99.016	133,39	-	4	4645
GAL	6	99.016	189,88	-	4	4785

## UNION, FLAT SEAT

Unión Asiento Plano  
 União Assento Plano  
 Verschraubung, Flach Dichtend  
 Manchon Union à Joint Plat  
 Bocchettone a Sede Piana

**330**  
 ISO U1



Finish	Dimension	Code	Index	IP	EP	g
BLK	1/4	63.002	12,60	-	220	62
GAL	1/4	63.002	15,65	-	220	96
BLK	3/8	63.003	9,50	-	200	89
GAL	3/8	63.003	11,65	-	200	92
BLK	1/2	63.004	6,50	-	100	159
GAL	1/2	63.004	7,85	-	100	178
BLK	3/4	63.006	7,40	-	90	282
GAL	3/4	63.006	9,15	-	90	286
BLK	1	63.007	8,25	-	60	364
GAL	1	63.007	10,40	-	60	375
BLK	1 1/4	63.008	14,25	-	40	597
GAL	1 1/4	63.008	17,90	-	40	597
BLK	1 1/2	63.009	18,35	-	25	688
GAL	1 1/2	63.009	23,15	-	25	699
BLK	2	63.010	30,20	-	20	1080
GAL	2	63.010	38,35	-	20	1099
BLK	2 1/2	63.011	69,55	-	14	1714
GAL	2 1/2	63.011	87,90	-	14	1754
BLK	3	63.012	102,05	-	8	2510
GAL	3	63.012	129,05	-	8	2555
BLK	4	63.014	238,55	-	5	3237
GAL	4	63.014	302,25	-	5	3325

## UNION, FLAT SEAT

Unión Asiento Plano MH  
 União Assento Plano MF  
 Verschraubung, Flach Dichtend  
 Manchon Union à Joint Plat  
 Bocchettone a Sede Piana

**331**  
 ISO U2



Finish	Dimension	Code	Index	IP	EP	g
BLK	3/8	67.003	10,30	-	120	99
GAL	3/8	67.003	12,70	-	120	104
BLK	1/2	67.004	7,45	-	80	195
GAL	1/2	67.004	9,20	-	80	202
BLK	3/4	67.006	8,15	-	50	327
GAL	3/4	67.006	10,30	-	50	344
BLK	1	67.007	9,90	-	40	447
GAL	1	67.007	12,30	-	40	464
BLK	1 1/4	67.008	17,10	-	20	745
GAL	1 1/4	67.008	22,45	-	20	751
BLK	1 1/2	67.009	21,55	-	20	888
GAL	1 1/2	67.009	27,15	-	20	895
BLK	2	67.010	33,50	-	10	1349
GAL	2	67.010	42,45	-	10	1372

## UNION, TAPER SEAT

Unión Asiento Cónico Hierro  
 União Assento Cônico de Ferro  
 Verschraubung mit Kegeldichtung  
 Manchon Union à Joint Conique  
 Bocchettone a Sede Conica

**340**  
 ISO U11



Finish	Dimension	Code	Index	IP	EP	g
BLK	1/4	62.002	11,45	-	220	92
GAL	1/4	62.002	14,10	-	220	96
BLK	3/8	62.003	10,35	-	200	115
GAL	3/8	62.003	12,70	-	200	125
BLK	1/2	62.004	7,80	-	100	181
GAL	1/2	62.004	9,75	-	100	172
BLK	3/4	62.006	8,80	-	90	278
GAL	3/4	62.006	11,05	-	90	282
BLK	1	62.007	10,25	-	60	359
GAL	1	62.007	12,75	-	60	365
BLK	1 1/4	62.008	16,90	-	40	611
GAL	1 1/4	62.008	21,95	-	40	619
BLK	1 1/2	62.009	19,85	-	25	725
GAL	1 1/2	62.009	25,70	-	25	751
BLK	2	62.010	32,55	-	20	1112
GAL	2	62.010	42,30	-	20	1136
BLK	2 1/2	62.011	73,55	-	14	1706
GAL	2 1/2	62.011	93,10	-	14	1776
BLK	3	62.012	102,55	-	8	2510
GAL	3	62.012	129,85	-	8	2607
BLK	4	62.014	206,95	-	5	3317
GAL	4	62.014	262,25	-	5	3494

## UNION, TAPER SEAT

Unión Asiento Cónico Hierro MH  
 União Assento Cônico de Ferro MF  
 Verschraubung mit Kegeldichtung  
 Manchon Union à Joint Conique  
 Bocchettone a Sede Conica

**341**  
 ISO U12



Finish	Dimension	Code	Index	IP	EP	g
BLK	3/8	65.003	9,10	-	120	108
GAL	3/8	65.003	11,45	-	120	148
BLK	1/2	65.004	7,65	-	80	200
GAL	1/2	65.004	9,50	-	80	211
BLK	3/4	65.006	9,25	-	50	323
GAL	3/4	65.006	11,50	-	50	333
BLK	1	65.007	11,45	-	40	452
GAL	1	65.007	14,25	-	40	458
BLK	1 1/4	65.008	18,10	-	20	768
GAL	1 1/4	65.008	22,65	-	20	793
BLK	1 1/2	65.009	23,15	-	20	916
GAL	1 1/2	65.009	29,05	-	20	935
BLK	2	65.010	36,95	-	10	1376
GAL	2	65.010	46,35	-	10	1423
BLK	2 1/2	65.011	80,35	-	9	2500
GAL	2 1/2	65.011	101,60	-	9	2581
BLK	3	65.012	125,50	-	6	2891
GAL	3	65.012	158,90	-	6	2961
BLK	4	65.014	229,95	-	4	3973
GAL	4	65.014	291,35	-	4	4069

## UNION, BRASS TAPER SEAT\*

Unión Asiento Cónico Bronce/Hierro  
 União Assento Cônico Bronze/Ferro  
 Verschraubung Messing auf Eisen  
 Union, Laiton/Fer  
 Bocchettone, Sede Ottone/Ferro

**342**



Finish	Dimension	Code	Index	IP	EP	g
BLK	1/4	61.002	17,82	-	220	99
GAL	1/4	61.002	26,18	-	220	104
BLK	3/8	61.003	22,62	-	200	126
GAL	3/8	61.003	33,44	-	200	133
BLK	1/2	61.004	18,80	-	100	171
GAL	1/2	61.004	26,45	-	100	196
BLK	3/4	61.006	20,90	-	90	285
GAL	3/4	61.006	31,15	-	90	293
BLK	1	61.007	27,30	-	60	357
GAL	1	61.007	38,90	-	60	363
BLK	1 1/4	61.008	37,70	-	40	612
GAL	1 1/4	61.008	56,10	-	40	635
BLK	1 1/2	61.009	45,65	-	25	751
GAL	1 1/2	61.009	68,00	-	25	766
BLK	2	61.010	57,80	-	20	1170
GAL	2	61.010	82,35	-	20	1211
BLK	2 1/2	61.011	109,52	-	14	1738
GAL	2 1/2	61.011	159,68	-	14	1761
BLK	3	61.012	172,22	-	8	2542
GAL	3	61.012	248,40	-	8	2643
BLK	4	61.014	360,26	-	5	3425
GAL	4	61.014	523,39	-	5	3680
BLK	5	61.015	702,50	-	2	5530
GAL	5	61.015	1.019,87	-	2	5524
BLK	6	61.016	1.191,93	-	1	9978
GAL	6	61.016	1.731,67	-	1	10132

\* Cooper taper seat from 1/2 to 2"  
 Asiento cónico cobre/hierro de 1/2 hasta 2"  
 Assento cônico cobre/ferro de 1/2 até 2"

## FLANGE FOR WATER RESERVOIR

Flange para Tanque de Agua  
 Flange para Caixa d'Água

**350**



Finish	Dimension	Code	Index	IP	EP	g
GAL	1/2	64.004	*	-	45	423
BLK	1	64.007	*	-	35	727
GAL	1	64.007	*	-	35	752
BLK	1 1/4	64.008	*	-	25	1004
GAL	1 1/4	64.008	*	-	25	1023
GAL	1 1/2	64.009	*	-	20	1359

\* Prices Available Upon Request

\* Precios Bajo Consulta

\* Preços Sob Consulta



## UNION BUSH

Componente Unión 330 y 331  
Junção para União 330 e 331  
Einschraubteil  
Pièce Filetée  
Pezzo Filettato

# 370



Finish	Dimension	Code	Index	IP	EP	g
BLK	3/8	77.003	2,55	10	400	32
GAL	3/8	77.003	3,00	10	400	37
BLK	1/2	77.004	2,55	10	380	53
GAL	1/2	77.004	3,00	10	380	54
BLK	3/4	77.006	3,15	10	250	100
GAL	3/4	77.006	3,90	10	250	100
BLK	1	77.007	3,70	10	200	135
GAL	1	77.007	4,70	10	200	141
BLK	1 1/4	77.008	5,30	5	95	241
GAL	1 1/4	77.008	6,55	5	95	255
BLK	1 1/2	77.009	6,95	-	80	227
GAL	1 1/2	77.009	8,40	-	80	236
BLK	2	77.010	12,15	-	60	419
GAL	2	77.010	15,10	-	60	419
BLK	2 1/2	77.011	24,15	-	33	657
GAL	2 1/2	77.011	30,55	-	33	713
BLK	3	77.012	38,90	-	15	839
GAL	3	77.012	49,20	-	15	844
BLK	4	77.014	78,43	-	12	1234
GAL	4	77.014	97,13	-	12	1376

## UNION END

Componente Unión 331  
Niple para União 331  
Einlegteil  
Pièce Folle  
Pezzo folle

# 371



Finish	Dimension	Code	Index	IP	EP	g
BLK	1/2	86.004	4,30	10	500	59
GAL	1/2	86.004	5,35	10	500	61
BLK	3/4	86.006	4,10	10	280	117
GAL	3/4	86.006	4,95	10	280	118
BLK	1	86.007	4,90	10	160	182
GAL	1	86.007	6,10	10	160	188
BLK	1 1/4	86.008	8,50	5	100	279
GAL	1 1/4	86.008	10,50	5	100	293
BLK	1 1/2	86.009	9,70	-	70	365
GAL	1 1/2	86.009	12,15	-	70	388
BLK	2	86.010	13,75	-	40	624
GAL	2	86.010	17,15	-	40	630

## UNION END

Componente Unión 330  
Niple para União 330  
Einlegteil  
Pièce Folle  
Pezzo folle

# 372

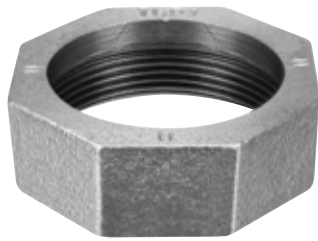


Finish	Dimension	Code	Index	IP	EP	g
BLK	1/4	83.002	2,75	60	720	17
GAL	1/4	83.002	3,60	60	720	22
BLK	3/8	83.003	2,75	40	480	25
GAL	3/8	83.003	3,60	40	480	26
BLK	1/2	83.004	2,75	10	500	52
GAL	1/2	83.004	3,60	10	500	41
BLK	3/4	83.006	2,85	10	300	72
GAL	3/4	83.006	3,90	10	300	80
BLK	1	83.007	2,90	10	200	99
GAL	1	83.007	4,20	10	200	99
BLK	1 1/4	83.008	4,55	5	100	184
GAL	1 1/4	83.008	5,75	5	100	191
BLK	1 1/2	83.009	6,15	-	100	228
GAL	1 1/2	83.009	7,75	-	100	232
BLK	2	83.010	9,85	-	60	402
GAL	2	83.010	12,20	-	60	414
BLK	2 1/2	83.011	21,45	-	44	574
GAL	2 1/2	83.011	27,05	-	44	577
BLK	3	83.012	38,90	-	24	829
GAL	3	83.012	49,20	-	24	849
BLK	4	83.014	78,43	-	15	1264
GAL	4	83.014	97,13	-	15	1276

## UNION NUT

Tuerca para Uni  
Porca Para União  
Überwurfmutter  
Ecrou  
Dado

# 374



Finish	Dimension	Code	Index	IP	EP	g
BLK	1/4	85.002	1,85	10	700	34
GAL	1/4	85.002	2,50	10	700	42
BLK	3/8	85.003	1,85	10	500	50
GAL	3/8	85.003	2,50	10	500	58
BLK	1/2	85.004	1,95	10	330	77
GAL	1/2	85.004	2,55	10	330	78
BLK	3/4	85.006	2,55	10	200	110
GAL	3/4	85.006	3,20	10	200	114
BLK	1	85.007	2,80	10	150	130
GAL	1	85.007	3,70	10	150	135
BLK	1 1/4	85.008	4,55	-	95	224
GAL	1 1/4	85.008	5,95	-	95	233
BLK	1 1/2	85.009	5,75	-	80	234
GAL	1 1/2	85.009	7,00	-	80	239
BLK	2	85.010	8,10	-	55	297
GAL	2	85.010	10,20	-	55	303
BLK	2 1/2	85.011	19,90	-	35	464
GAL	2 1/2	85.011	25,15	-	35	464
BLK	3	85.012	25,65	-	25	847
GAL	3	85.012	32,40	-	25	862
BLK	4	85.014	56,17	-	15	861
GAL	4	85.014	69,54	-	15	919

## EXTENSION TUBE

Cupla Prolongada MH  
Luva Alongada MF  
Verlängerung  
Allonge  
Prolongamento

# 526



Finish	Dimension	Code	Index	IP	EP	g
BLK	1/2 - 60	34.104	5,00	10	280	90
GAL	1/2 - 60	34.104	6,10	10	280	84
BLK	3/4 - 70	34.206	3,76	10	140	136
GAL	3/4 - 70	34.206	12,59	10	140	139
BLK	3/4 - 90	34.106	8,60	10	110	130
GAL	3/4 - 90	34.106	10,90	10	110	168

## EXTENSION SOCKET

Cupla MH  
Luva MF  
Verlängerung  
Allonge  
Prolongamento

# 529a

ISO M4



Finish	Dimension	Code	Index	IP	EP	g
BLK	1/2	33.004	3,15	10	370	62
GAL	1/2	33.004	3,95	10	370	66
BLK	3/4	33.006	4,60	10	240	100
GAL	3/4	33.006	5,90	10	240	102
BLK	1	33.007	7,20	10	130	159
GAL	1	33.007	9,15	10	130	165
BLK	1 1/4	33.008	9,45	5	90	237
GAL	1 1/4	33.008	11,70	5	90	247

## Correlation of the inch and mm sizes

Fitting Size	1/8	1/4	3/8	1/2	3/4	1	1 1/4	1 1/2	2	2 1/2	3	4	5	6
Nominal Size DN	6	8	10	15	20	25	32	40	50	65	80	100	125	150
Old French Denomination	5-10	8-13	12-17	15-21	20-27	26-37	33-42	40-49	50-60	66-76	80-90	102-114	127-140	152-165





[www.tupy.com.br](http://www.tupy.com.br)

Agosto/2014 [vivas.com.com.br](http://vivas.com.com.br)

**TUPY S.A.**

Rua Albano Schmidt, 3400 • 89227-901 • Joinville • SC

Tel.: +55 (47) 4009-8434 • +55 (47) 4009-8163 • Fax: +55 (47) 4009-8500

E-mail: [fittings@tupy.com.br](mailto:fittings@tupy.com.br)



**TUPY**